

KONA MACRO GATEWAY

Quick Start Guide

Powering Up the Gateway

Macro Gateway supports one external LoRa antenna, copper Ethernet (PoE+) backhaul, and optional 3G/4G wireless backhaul. The gateway can be powered either via PoE or DC Power.

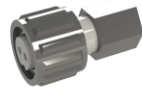
What's in the Box:



KONA Macro Gateway



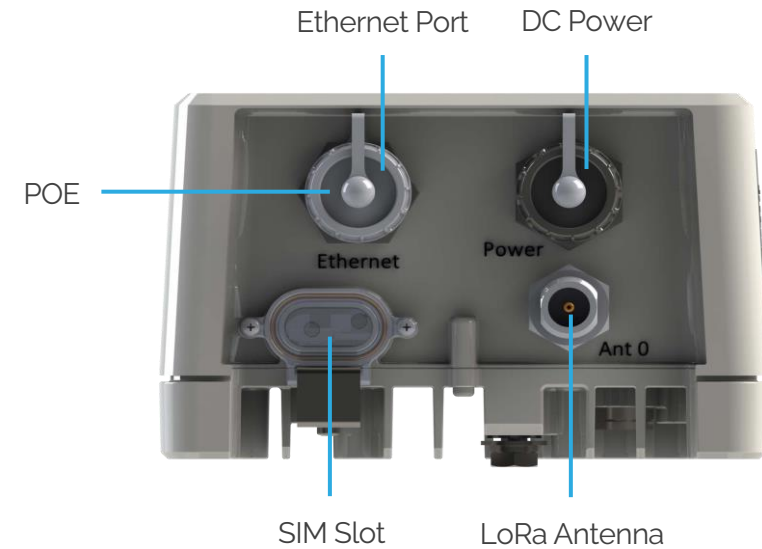
KONA Mounting Kit



DC Power Connector



Safety Ground Cable



Note:

- To install the Gateway you also need POE Injector, External LoRa Antennas and Ethernet Cable that are sold separately
- Refer to [Antenna Selection Guide](#) for information on antenna use cases and recommendations
- Refer to [User Guide](#) for more information on deployment, installation and regulatory considerations

Configuration & Activation



Commissioning the Gateway Using LeapX Application

To install LeapX Application on your Smart Device, please search for "TEKTELIC LeapX" on the Google Play Store or the Apple App Store. Once the app is installed, you can create an account or log in using the username and password of your existing TEKTELIC account. Then follow the in-app instructions online.



Managing the Gateway Using Kona Link

Web Interface for TEKTELIC Gateway Management [Kona Link](#)

Note: once the Gateway shows "Online" you are ready to add sensors to your network.

Gateway Troubleshooting

KONA Macro LED States

LED State	Functional Description	Action Required
No LED	No power to gateway.	Apply power to gateway. If the condition persists, contact customer support.
Solid Green	Gateway is operational with a packet forwarder running. LoRaWAN packet transmission and reception functions are operating normally.	No action required: Gateway is in stable state.
Flashing Green	Module is initializing. No downlink packets have been transmitted by the gateway in the last 10 minutes. GPS unlocked for more than 24 hours.	Typical boot time is <2 minutes, but may take up to 15 in case of software upgrade. If after 15 minutes LED still flashing green, power up a sensor near gateway to initiate a Join Request. LED will transition to solid green when it transmits Network Server's Join Accept message. If the Gateway has been powered up for over 24 hours and normal LoRaWAN traffic is present, check GPS antenna connection and make sure it has a clear view of the sky.
Solid Red	Unit is in fault condition and requires service	Undesired state. Power cycle the gateway. If the condition persists, contact customer support.

If you have questions about using this Gateway please refer to the knowledge base at knowledgehub.tektelic.com