

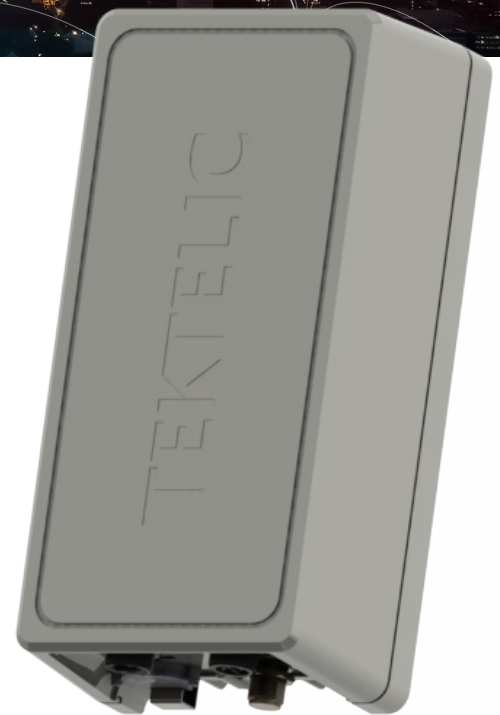
KONA Macro IoT Gateway

Scalable LoRaWAN™ Gateway for Outdoor Deployments

The KONA Macro IoT Gateway is an ideal solution for operators and enterprises that require a very scalable low cost LoRaWAN™ gateway that minimizes network TCO while improving coverage and capacity. In order to facilitate rapid deployment, the gateway is designed to be extremely compact and light weight. With both the cellular modem and GPS antennas embedded internally the KONA Macro is targeted at network sites that dictate a small form factor and low power consumption. Rated IP67 it is designed for the most demanding outdoor installations. The KONA Macro can be installed in various locations reducing site and deployment costs while addressing different vertical IoT applications.

Product Differentiators:

- Optimize coverage and capacity with a cost-effective and extremely compact LoRaWAN™ gateway.
- Quick and easy deployment made possible with custom mounting options, including utility pole, lamp post, tower, roof or wall mounts.
- Reduce set-up costs with plug-and-play installation utilizing the custom provisioned factory image.
- Lower site operational costs due to low power consumptions and passive cooling.
- High availability carrier grade design with support for in-service configuration and software updates.
- Excellent out of band rejection of Interference from other networks such as Cellular and Paging.
- Fully integrated with the broad eco-system of LoRa™ network servers and sensors.



Key Features

NA915, EU868, AU915, AS923 ISM Bands

Frequency Duplex 16 Rx / 2 Tx (NA)

Time Duplex 16 Rx / 2 Tx (Int.)

Integrated Bandpass Filter

Integrated GPS and 3G/4G Antenna

Precise Network Synchronization (GPS)

27 dBm Tx Power

Hardended Carrier Grade Enclosure

Backhaul Connectivity (ETH / 3G / 4G)

Geolocation (optional)

Versatile Mounting Options

KONA Macro IoT Gateway

Scalable LoRaWAN™ Gateway for Outdoor Deployments

Technical and Functional System Specifications

Mechanical Parameters

| | |
|-------------------------|------------------------|
| MTBF | 850,000 hours |
| DC Power Consumption | < 12 W |
| Operational Temperature | -40°C to +60°C |
| Operational Humidity | 10% to 100% Condensing |
| Ingress Protection | IP67 |
| Size | 144 x 282 x 92 mm |
| Weight | 2.6 kg |
| Volume | 3.7 L |

Interfaces

| | |
|---------------------------|-------------------------|
| Ethernet Backhaul | RJ-45 |
| GPS | (internal antenna) |
| Cellular Backhaul (3G/4G) | (internal antenna) |
| LoRa Antenna | N-Type |
| Power | -48VDC or PoE (802.3af) |

Regulatory Compliance

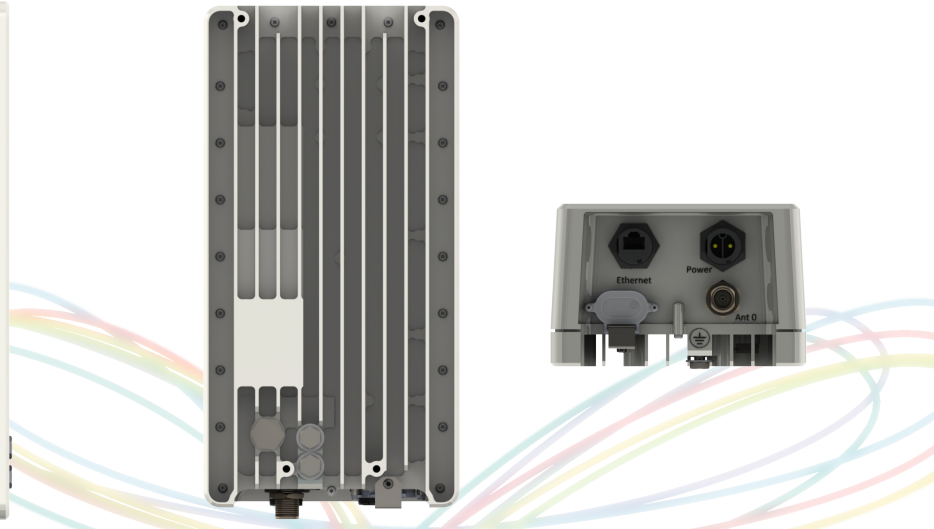
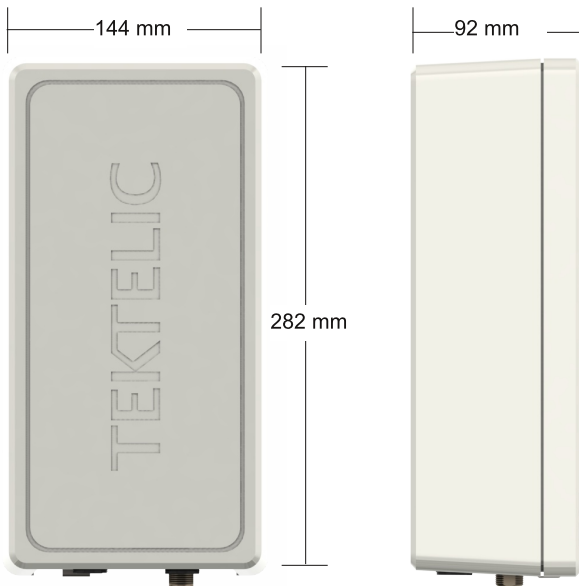
| | |
|------------------|---|
| Safety | UL60950-1(US/C) IEC 60950-1 (CE) |
| Environmental | ETSI EN 300 019-2 |
| Regulatory (EMC) | FCC Part 15.247, 109, 209 ETSI EN 55022 Class B ETSI EN 55024 ETSI EN 300 489-1/-3 |

LoRa Radio Parameters

| | |
|------------------|-----------------------------------|
| ISM Bands (FDD) | NA902-928, CN470-510 |
| ISM Bands (TDD) | EU868, AU915, AS923, JP920, CH779 |
| Tx Power | 27 dBm |
| Rx Sensitivity | -142 dBm (SF12, 293 bits/sec) |
| Rx Noise Figure | 3.5 dB |
| Rx Linearity | -10 dBm |
| Rx Dynamic Range | 70 dB Analog, 100+ dB Digital |

Software and Management

| | |
|------------|---|
| Tools | Access Control List management 3G/4G Parameter Configuration System Health Monitor Radio Configuration and Control Remote Software Upgrade Active and Passive image management Factory image provisioning Field Configuration Tool |
| Networking | DHCPv4 client TFTP server HTTP server Firewall and Access Lists Firewall and Access Lists |



Specifications subject to change without notice.

TEKTELIC Communications is a premier supplier of best-in-class LoRaWAN™ IoT Gateways, Sensors, and custom applications. These elements combined provide a powerful end-to-end solution that can be easily, quickly, and cost effectively deployed to address the most demanding IoT challenges.

For more information please visit www.tektelic.com

TEKTELIC
communications

LoRa Alliance Member™