

Wall Mount Installation

MOBOTIX MOVE BulletCameras can be mounted with the Mx-M-BC-W wall mount. The items and tools needed for installation are listed as follows.

Mx-M-BC-W Package Content:

- Wall Mount Junction Box
- Plastic Screw Anchor x3
- M4 x 25MM Self-Tapping Screw x3
- M4 x 12MM Mechanical Screw x5
- Waterproof Washer x3
- Cable Gland

Items Needed:

- Ethernet Cable
- Power Cable (necessary if PSE is not available)
- Alarm Cable (optional)
- Audio Cable (optional)

Tools Needed:

- Drill
- Screwdrivers (Allen, flat)
- Spanner

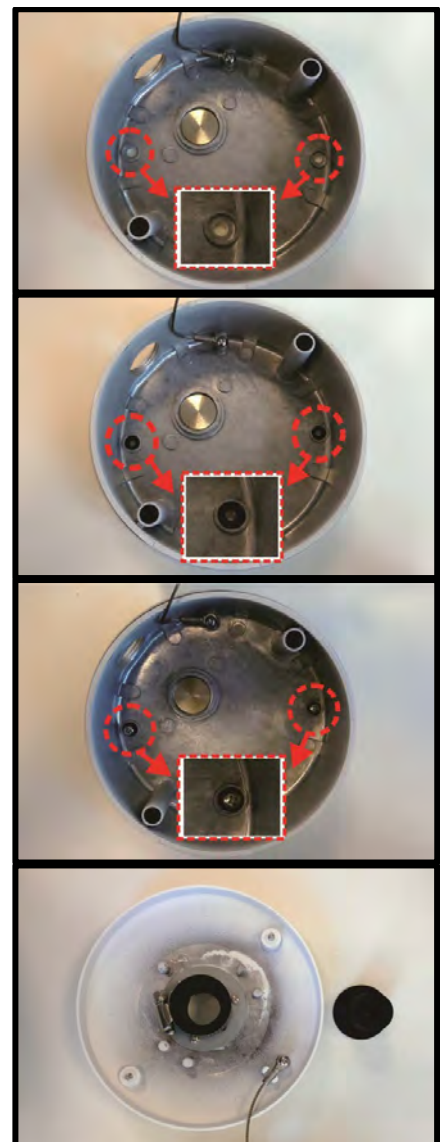
Follow the steps below to install the BulletCamera with the Wall Mount:

Step 1: Loosen the two screws indicated in the right figure with the screwdriver and detach the Wall Mount Junction Box cover.



Step 2: Place the Wall Mount Junction Box at the preferred installation location. On the wall, mark the position of the two screw holes indicated in the right figure. Drill a hole on each marked screw hole, and insert the plastic screw anchors into the drilled holes.

Step 3: Paste the supplied waterproof washers on the two screw holes. Match the two screw holes of the Wall Mount Junction Box with the plastic screw anchors at the installation location. And then fasten the Wall Mount Junction Box to the wall with the supplied M4 self-tapping screws.

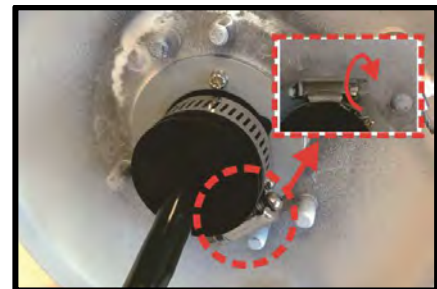


Step 4: Remove the rubber plug from the cable entry hole of the Wall Mount Junction Box cover.

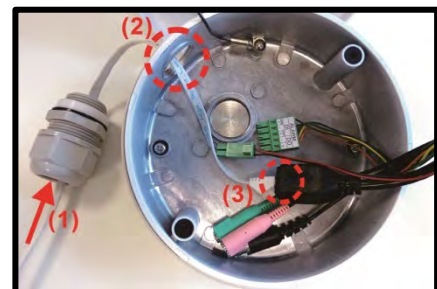
Step 5: Thread the connectors of the All-in-One cable of the camera one by one through the cable entry hole.



Step 6: Insert the rubber plug back to the cable entry hole and use a flathead screwdriver to tighten the stainless steel ring by turning the knob clockwise. Make sure there's no gap between the All-in-One cable and the cable entry hole.



Step 7: Connect the required cables, e.g. Ethernet cable, to the connectors of the All-in-One cable through (1) the cable gland and (2) the conduit entry hole. (3) If necessary, coat the joints between the connectors and the cables with silicone gel.



For the cable gland installation, please follow the steps below:

Step A: Loosen the thread-lock sealing nut from the cable gland body.

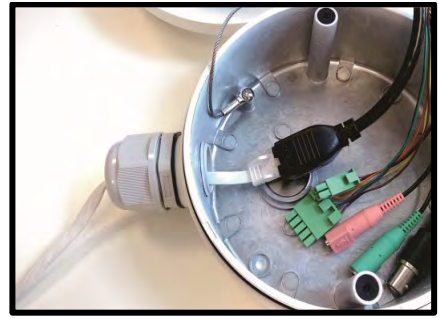


Step B: Insert the required cables, e.g. Ethernet cable, to the thread-lock sealing nut and the cable gland body from the bottom.

Step C: Twist the cable gland body a little bit back to the thread-lock sealing nut but not entirely tightened.



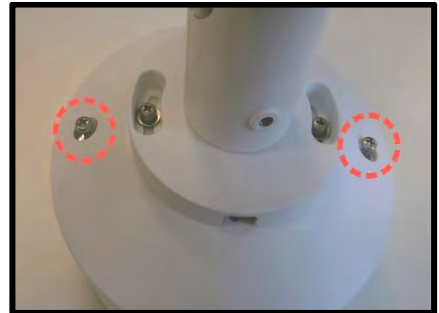
Step 8: Adjust the cables and twist the cable gland into the conduit entry hole.



Step 9: Arrange the All-in-One cable orderly, and put back the Wall Mount Junction Box cover. Align the two screw holes of the camera with the screw holes on the Wall Mount Junction Box cover, and fasten the camera with the M4 Mechanical Screws.



Step 10: Adjust the position of Wall Mount Junction Box cover properly and fasten the two screws to tighten the cover.



NOTE: When securing the Wall Mount Junction Box cover, user **MUST** align the two arrow marks with each other to ensure the cover is properly fixed.



Step 11: Fasten the thread-lock sealing nut tightly with a spanner until the cable is completely covered.

