

MYRKOS VIEW

Software Application

PROVIDES ON-SITE TRANSFORMER CONDITION ASSESSMENT BASED ON THE (HIGHLY ACCURATE) DGA RESULTS FROM THE MYRKOS INSTRUMENT.

The Myrkos View is a standalone application available at no additional charge to Myrkos instrument users and provides simple access to available sample gas data monitored by Morgan Schaffer's PPM Report. Use the Myrkos View to connect to the PPM report database and view historic samples, diagnostic condition assessments, and trends for specific assets.

Transformer Characteristics

Equipment:	TestDoblePoint_Desicca	Serial Number:	ABC1234	Designation:	Transfo 1
Transformer Type:	LTC	Substation:	Montreal	Model:	No1
Oil Type:	Mineral	Manufacturer:	MS	MVA:	10
Analysis Method:	Free Breathing	Year of Manufacture:	1990	KVA:	100

Export Samples Export Chart

Samples Diagnostics Extended Diagnostics Trends

Date	H2	CH4	C2H2	C2H4	C2H6	O2	N2	CO	CO2	TDG	TDGG	THCG	Oil Temp
1994-01-01 00 h 00 min	1777,934	3333,333	1666,666	5000	100	4,1	5	104	504	0	0	0	50
1993-01-01 00 h 00 min	94,71830	750	375	300	100	3,1	4	103	503	0	0	0	50
1992-01-01 00 h 00 min	67,34712	379,7468	189,8734	150	100	2,1	3	102	502	0	0	0	50
1991-01-01 00 h 00 min	247,2309	169,7468	188,6075	149	100	1,1	2	101	501	0	0	0	50
1990-01-01 00 h 00 min	50,31903	73,55696	188,6075	149	7	0,1	1	100	500	0	0	0	50

Connects Quickly

Myrkos View

Transformer Characteristics

Equipment:	TestDoblePoint_Desicca	Serial Number:	ABC1234	Designation:	Transfo 1
Transformer Type:	LTC	Substation:	Montreal	Model:	No1
Oil Type:	Mineral	Manufacturer:	MS	MVA:	10
Analysis Method:	Free Breathing	Year of Manufacture:	1990	KVA:	100

Export Samples Export Chart

- Open Myrkos View
- Select equipment to analyze
- Select a Transformer Type and Oil Type to generate accurate assessments in Diagnostics.

Easy Data Export

Myrkos View does not save data; however, it does allow users to export data. Sample data and related condition assessments can be exported in CSV format and plotted charts can be exported in PNG format.

Simple Data Display

Data is organized simply and displayed in four separate tabs: samples, diagnostics, extended diagnostics, and trends.

Samples Display

The Samples tab displays available sample data in a simple table, sorted by date.

Date	H2	CH4	C2H2	C2H4	C2H6	O2	N2	CO	CO2	TDG	TDCG	THCG	Oil Temp
1994-01-01 00 h 00 min	1777,934	3333,333	1666,666	5000	100	4,1	5	104	504	0	0	0	50
1993-01-01 00 h 00 min	94,71830	750	375	300	100	3,1	4	103	503	0	0	0	50
1992-01-01 00 h 00 min	67,34712	379,7468	189,8734	150	100	2,1	3	102	502	0	0	0	50
1991-01-01 00 h 00 min	247,2309	169,7468	188,6075	149	100	1,1	2	101	501	0	0	0	50
1990-01-01 00 h 00 min	50,31903	73,55696	188,6075	149	7	0,1	1	100	500	0	0	0	50

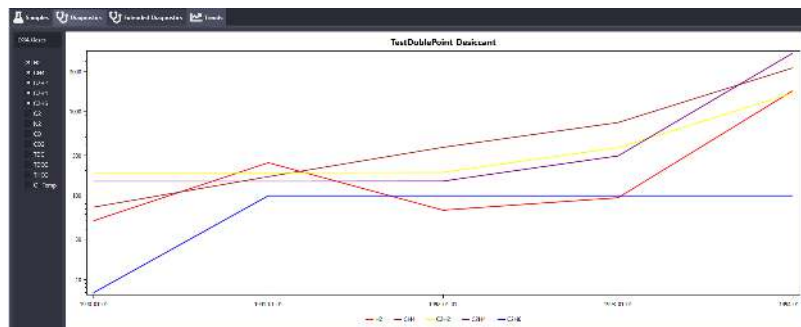
Diagnostics Display

The Diagnostics tab displays the main gases and condition assessments for each sample using diagnostic methods: Duval Triangles and Pentagon, IEC ratios, Rogers Ratios and Key Gas. It also indicates the condition level based on key gases, as indicated in IEEE C57.104-2008 standard.

Date	H2	CH4	C2H2	C2H4	C2H6	CO	Duval Triangle	Duval Triangle 4	Duval Triangle 5	Duval Pentagon	Rogers Gas Ratios	IEC 60599 Gas Ratios	Doernenburg	Key gas
1994-01-01 00 h 00 min	1777,934	3333,333	1666,666	5000	100	104	X3 = Fault T3 or T2 in prog	N/A	N/A	N/A	N/A	N/A	N/A	N/A
1993-01-01 00 h 00 min	94,71830	750	375	300	100	103	X1 = Abnormal arcing D1	N/A	N/A	N/A	N/A	N/A	N/A	N/A
1992-01-01 00 h 00 min	67,34712	379,7468	189,8734	150	100	102	X1 = Abnormal arcing D1	N/A	N/A	N/A	N/A	N/A	N/A	N/A
1991-01-01 00 h 00 min	247,2309	169,7468	188,6075	149	100	101	X3 = Fault T3 or T2 in prog	N/A	N/A	N/A	N/A	N/A	N/A	N/A
1990-01-01 00 h 00 min	50,31903	73,55696	188,6075	149	7	100	X3 = Fault T3 or T2 in prog	N/A	N/A	N/A	N/A	N/A	N/A	N/A

Trends Display

The Trends tab displays data for the gases you select in a single chart. To accommodate multiple gases displayed on one chart, the Y axis uses a logarithmic scale.



System Requirements

- Microsoft® Windows 7 SP1 or later.
- Microsoft .Net 5 Desktop Runtime (<https://dotnet.microsoft.com/en-us/download/dotnet/thank-you/runtime-desktop-5.0.13-windows-x64-installer>)
- Compatible only with Morgan Schaffer PPM Report
- Easy to install. No prerequisites. No license. No password. No frills.

DGA DIAGNOSTIC TOOLS COMPARISON CHART

GE Transport X2

Duval Triangle
• Mineral

Roger Ratios

Key Gas Ratio

ETRA japan

Myrkos View

Duval Triangle
• Mineral
• LTF (4,5,6,7)
• Midel
• FR3
• Silicone
• OLTC

Duval Pentagon

Roger Ratios

Doernenburg Ratio

IEC60599 Ratio

Key Gas Ratio

IEEE 57-104-2008

Multiple Languages

The Myrkos View can be used in a variety of languages. Make a language selection directly in the interface. For translated versions of the User Guide, please contact us.



Doble Engineering Company

Worldwide Headquarters
123 Felton Street, Marlborough, MA 01752 USA
tel +1 617 926 4900 | fax +1 617 926 0528
www.doble.com

Specifications are subject to change without notice.

Doble is an ISO 9001 & ISO/IEC 17025 & 17034 Certified Company.
Doble is an ESCO Technologies Company.
PUBLISHED: MARCH 2022